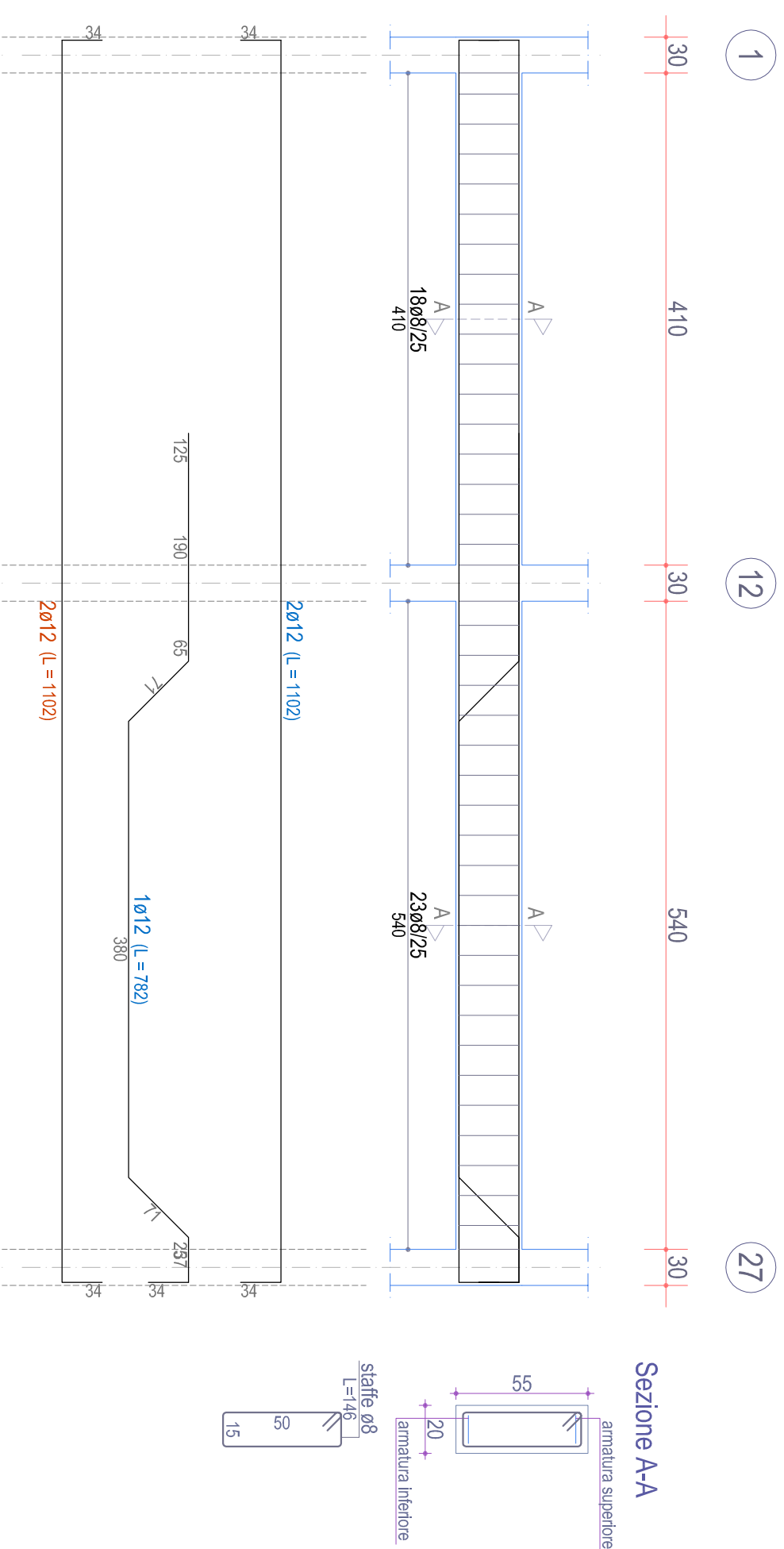


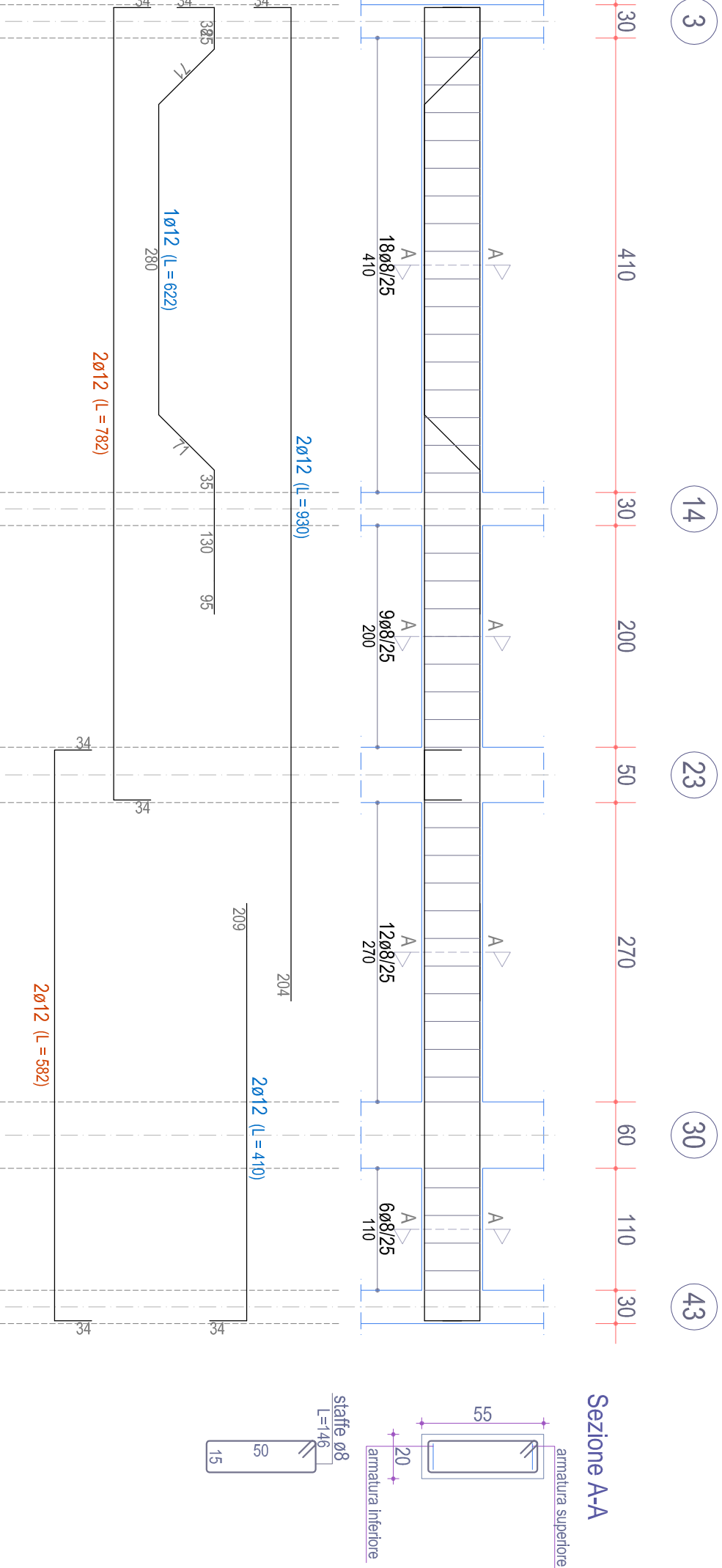
<p><b>Il depositante</b></p> <p>Aut. Sanzione Capitali          Azioni benicorabili tecnologiche 1,1%          2172 Reggia - online.giustiziarietologica.it</p>	<p><b>Il responsabile unico del procedimento e          Vicesegretario del Consiglio di Amministrazione (CA) Capogruppo</b></p> <p>Ing. FRANCESCO SORRIL</p>
	<p><b>Il delegato dell'Autore poliziotto</b></p> <p>Ing. VINCENZO DE ENRICA</p>

TAVOLA	TEMA	ES21
086	AGGIORNAMENTI	L'IMPRESA
		IL DIRETTORE DEI LAVORI
		DATA
		ORA 1:50

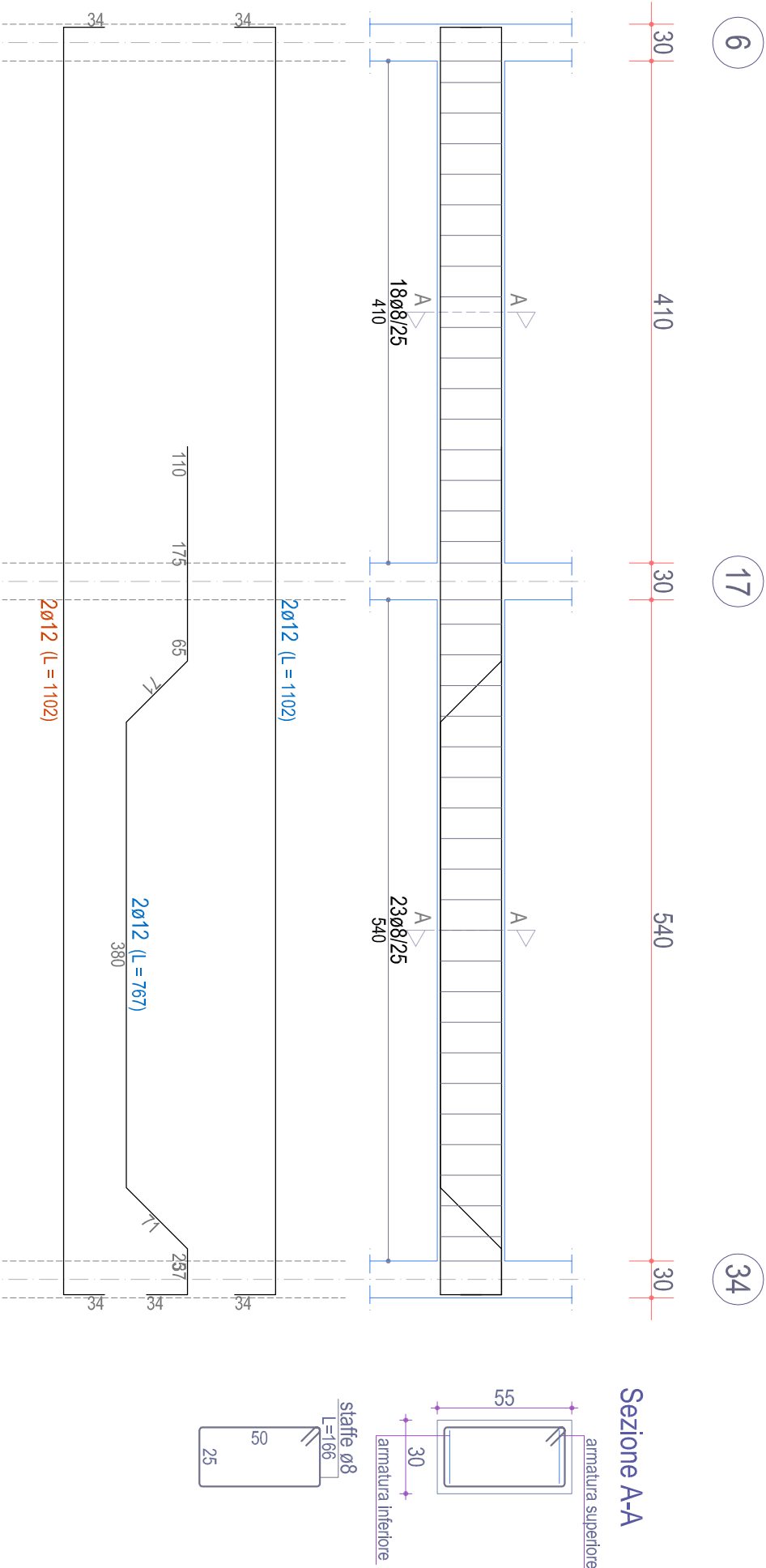
TRAVE 1-12-27 (esistente)



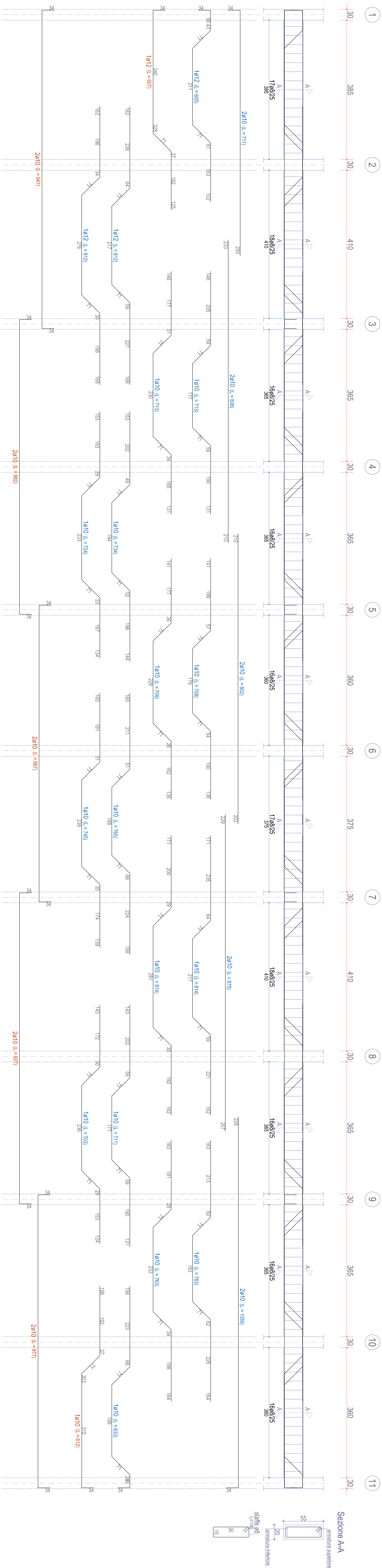
TRAVE 3-14-23-30-43 (esistente)



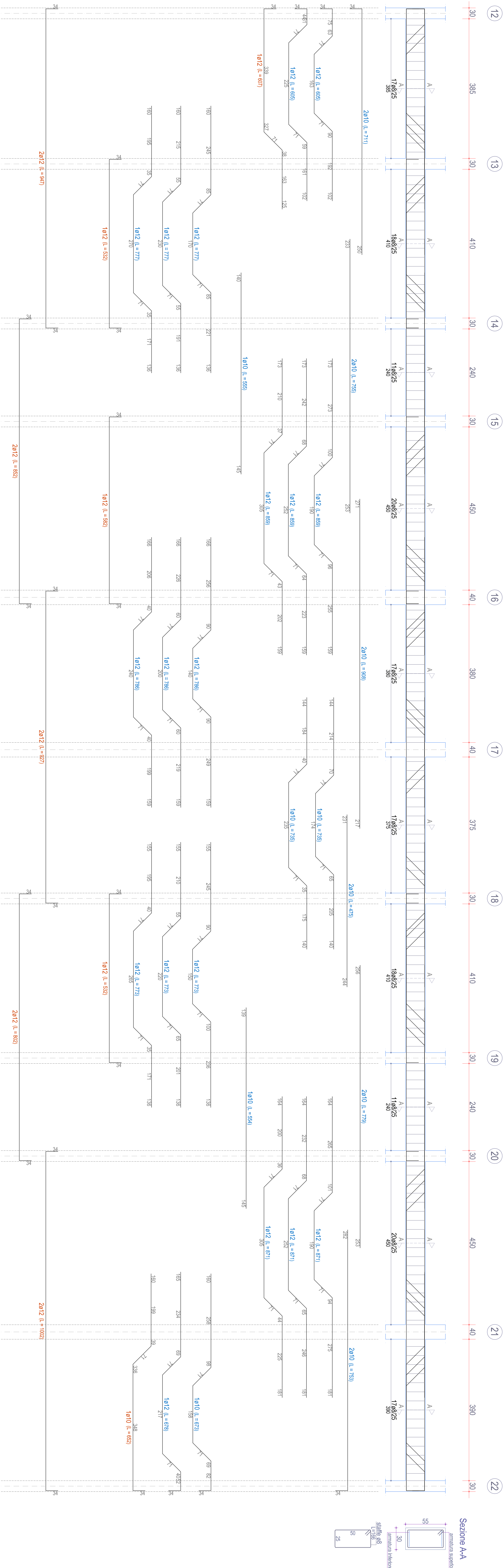
TRAVE 6-17-34 (esistente)



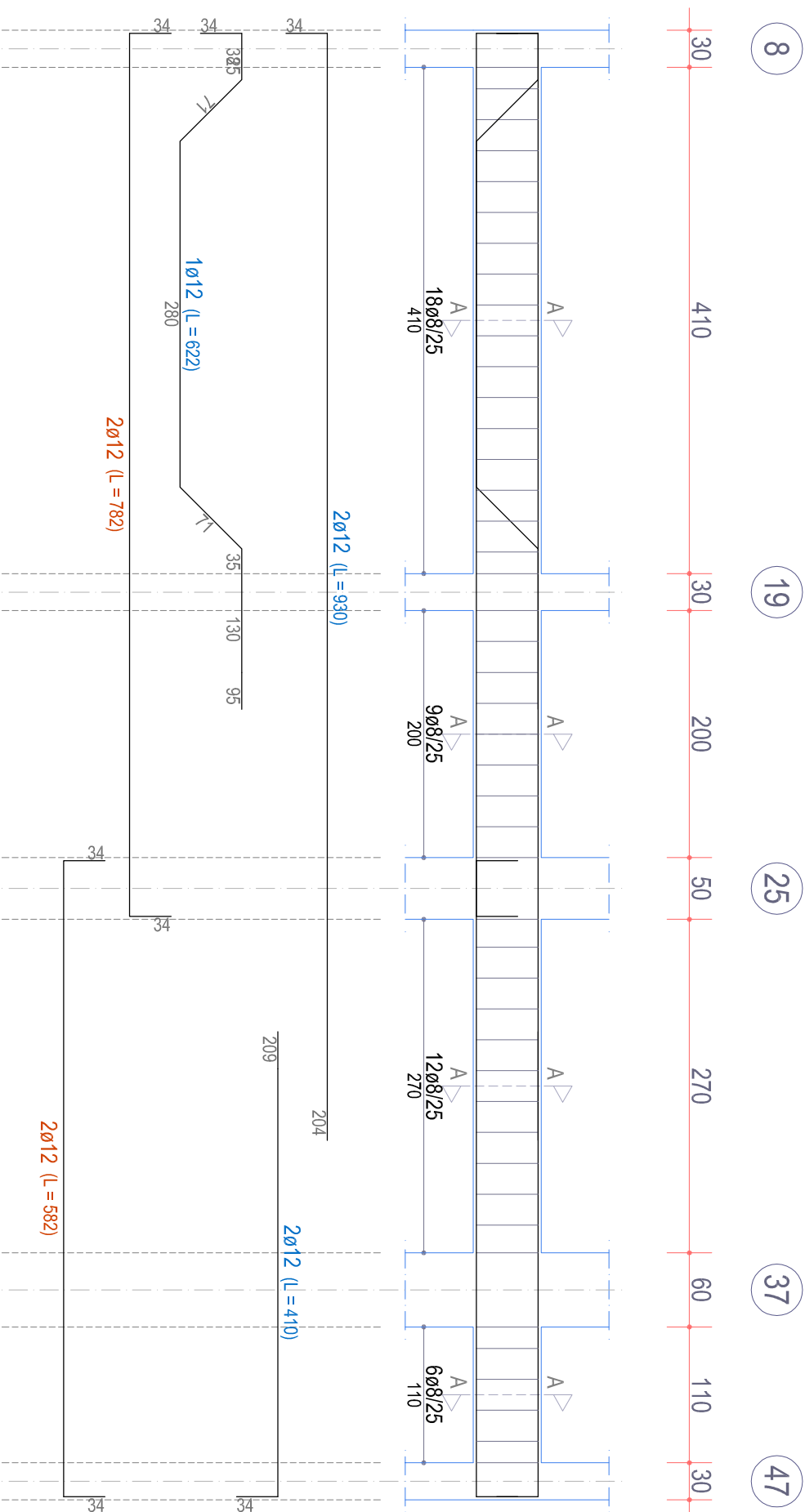
TRAVE 1-2-3-4-5-6-7-8-9-10-11 (esistente)



TRAVE 12-13-14-15-16-17-18-19-20-21-22 (esistente)



TRAVE 8-19-25-37-47 (esistente)



TRAVE 11-22-41 (esistente)

